

*Talgwijing Gisna  
Talo'teget?*





*Ugjit*

*Lillian Germaino'q aqq Blanche Metallico'q  
Iapjiw Migwitelmaten.*

**Gisimawilugwatmi'tij:**

Lillian Germain  
Marilyn Jacques  
Blanche Metallic  
Jessica Metallic  
Vicky Metallic  
Lola Vicaire  
Milaine Mercier-Pitre

'Nnu'gina'muejjig: Mary Ann Metallic aqq Janice Vicaire  
Niganpugutg Siawiminuignewa'tu'g 'Gtli'sutiminu: Marsha Vicaire  
Napwi'gigng Gisa'laji: Olivia Isaac

Copyright © 2020 Listuguj Education, Training & Employment  
All rights reserved. Images cannot be duplicated or reproduced without  
written consent of the copyright holders of this resource.

Title: Talgwijing Gisna Talo'teget?

ISBN: 978-1-989538-18-0

Date: 202009



“Siawiminuignewa'tu'g 'Gtli'sutiminu”  
Listuguj Education, Training & Employment  
1 Riverside West,  
Listuguj, QC G0C 2R0  
[www.listuguj.ca](http://www.listuguj.ca)

Funded by the  
Government  
of Canada

Canada 

Talgwijing Gisna

Talo'teget?





# Talgwijing gisna talo'teget Matle'nji'j?

Matle'nji'j 'lluigneg te'sipuna't.

Mu piamsa'qeg gisiws'tqamuinnitl uggwe'ji'jl.

Me' gatu gesalatl uggwe'ji'jl, telwisinnitl Jessi.

Te'sigisg'g nemiatl uggwijn ta'n teliangweiwanij Jessial.

'Gsass negm gisignnaj aqq gisimila'sualaj.

Newte'jgeg na'gwe'g, gissmuteg Jessi,

na Matle'nji'j pipanimut 'gtu'gnnan aqq

'gtu'mila'sualan uggwe'ji'jl.

## Matle'nji'j welgwijing.

## Talgwijing gisna talo'teget Alili?

Alili tugwa'lut ugjit ilajin aqq najigina'masin.  
Alili mu gisimnja'sigw.

Na telimatl uggwiji, "Giju', mu welo'tegew."

Uggwiji sama'taj ugtugwejan. Getloqo Alili  
epsimgeweit aqq elg ma'muno'q'g.

**Alili gesnugwat.**







# Talgwijing gisna talo'teget Ta'pit?

Ta'pit aqq Matio etlmila'tijig gujmug.

Ta'pit nemiatl 'nmu'jl wejgutugwi'mnnitl.

Na poqjijipaqa'sit.

Matio telimatl, "Ma' tala'lulnug, pas'g getu'mila'sit."

Ta'pit megtuatl Matioal muta gi's sa'qeg igtig 'nmu'j wenaqietuapnn aqq nistesguapnn Ta'pital.

**Ta'pit jipasit.**

# Talgwijing gisna talo'teget Tuma?

Tuma ajipuna't gisgug, nanipuna't.  
Gina'matio'guomg eig aqq nenaqite'tg  
'nmien muta geitoq ge'gs tetew ugjit negm.

Pegisingeg wiguaq, nemiaji 'ms't witapa aqq wigma.  
Elg nemitoq mesgi'g ge'gs ge'guteg patawti'jigtug.

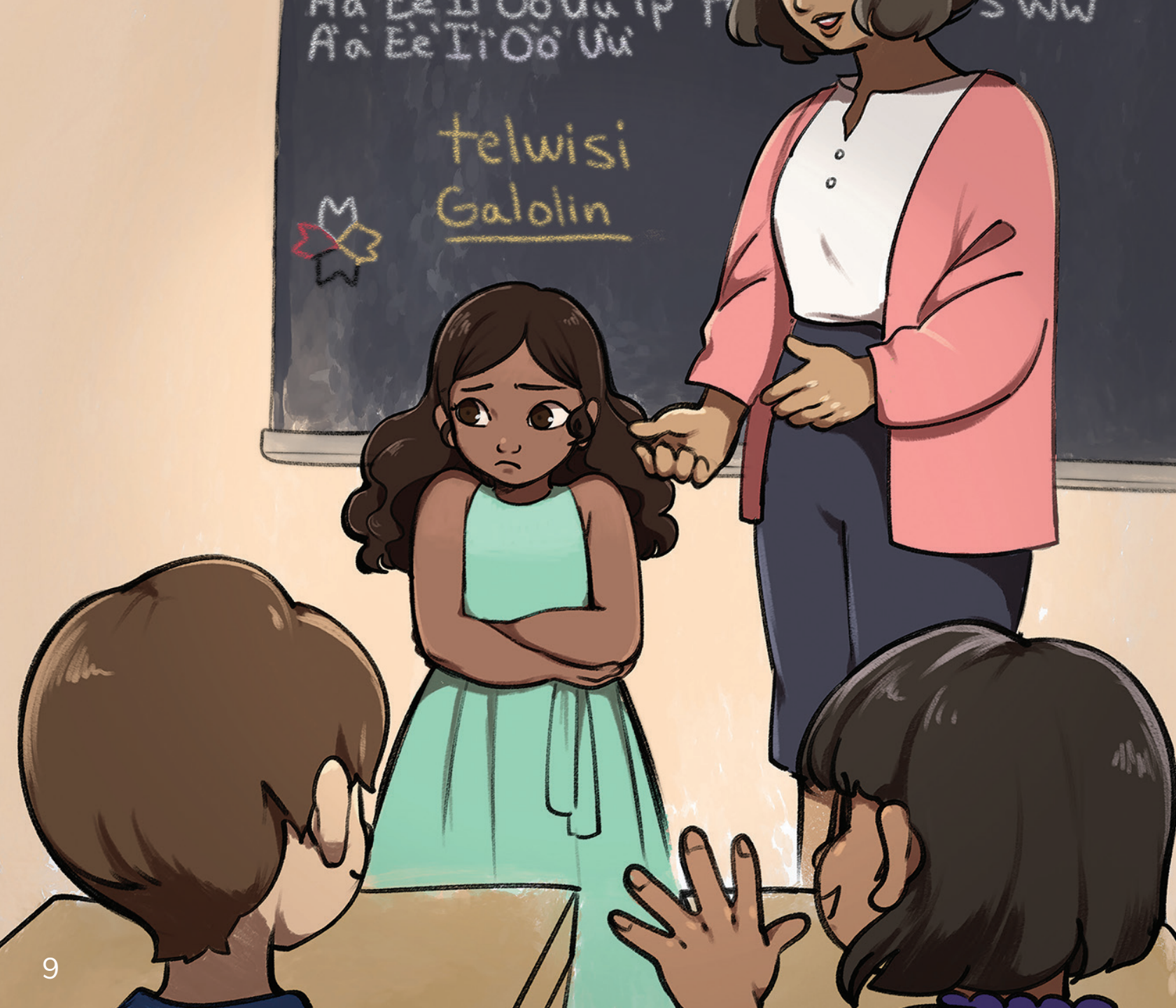
Na 'ms't getapegiewa'titl Tumaal,

*“Uliajipuna' Tuma,  
Uliajipuna' Tuma,  
Uliajipuna' Tuma,  
Uliajipuna' Tuma!”*

Elg nemitoq pilei, megwe'g altesgasimgewei.

## Tuma pa'qalaig!





## Talgwijing gisna talo'teget Galolin?

Galolin aqq ungi'gug pejiwsultipnig Listugujg.

Gisgug, Galolin poqjigina'masit Alaqsite'w Gitpu.  
Uggwiji pisgwijewtl muta Galolin mu nenuagul wenn.

Weltesgua'titl nujigina'muennitl aqq negm  
telimatl Galolinal, "Ge' tlim 'ms't wen ta'n telwisin."  
Galolin mu getu'glusigw aqq getu'apajinmiet.

**Galolin netage'g.**

## Talgwijing gisna talo'teget Pie'l?

Pie'l aqq ujjl etliasuaqtati'titl tu'aqann gujmug.  
Na Pie'l pejia'sisegetl tu'aqann 'llutaqanigtug.  
Pie'l najinmisguatl, gatu mu nemiagul tami  
muta wesampitaqsegl 'msigu'l.

Na pipanimatl ujjl gisiapoqonmagun.  
Pie'l aqq ujjl gwilua'titl tu'aqann.  
'Lpa mu we'jia'tigul tami.  
Pie'l siawie'napna ugtu'aqanma.

**Pie'l ewulgwijing.**







## Talgwijing gisna talo'teget Plassua?

Plassua etlmila'suatg papitaqan gujmug.

Uggwiji pipanimtl gisitoqomila'tinew uggwe'ji'jl, gulaman gisiwissugwategetew.

Plassua uggwe'ji'jl telwisinnitl Mali aqq tapuipuna'nitl.

Etlmila'ti'titeg, Plassua petta'pnn Malial.

Nige' Mali etltemit. Plassua telimatl, "Mesgeii."

### **Plassua mesge'g.**

## Talgwijing gisna talo'teget Pille'j?

Pille'j aqq witapa etlmilita'jig gujmug Alaqsite'w Gitpu. Alt maljewe'jg na'te'l eimu'tijig me' mesgilultijig aqq Pille'jal.

Na 'ms't wen getu'tepa'sitl papitaqane'l te'sipowji'jl toqo pas'g newte'jit epit.

Te's Pille'j getu'tepa'sij, na na'tuenn nigantesgatl.

**Pille'j wegaig.**





# Talgwijing gisna talo'teget Enli?

Enli nanipuna't aqq ugsisl Nuelal  
metla'sipuna'nitl jel ta'pu. Enli gesite'lmatl ugsisl.

Nuelo'q eliepnaq gampigtug ugjit tapu'gl aqantie'uti'l.  
Nige' gi's newte' aqantie'uti mu eimug.

Te'siula'gw Enli pipanimatl uggwijn,  
“Giju', ta'nug Nuel apaja'sitew?”

Uggwijn telimtl,  
“Mejit newte' aqantie'uti we'gaw Nuel apaja'sij.”

Enli musualatl Nuelal muta pewalatl  
na'tuenn ta'n mila'titaq.

**Enli siwe'g.**

# Talgwijing gisna talo'teget Ema?

'Nnueiei mawio'mi wesgowa's'g qospemg;  
mijjuaqan aqq pugwelg ta'n goqwei pemiaq.

Ema aqq igtigig maljewe'jg ta'n  
etlgina'masultijig Alaqsite'w Gitpu, eltejo'lujig qospemg.

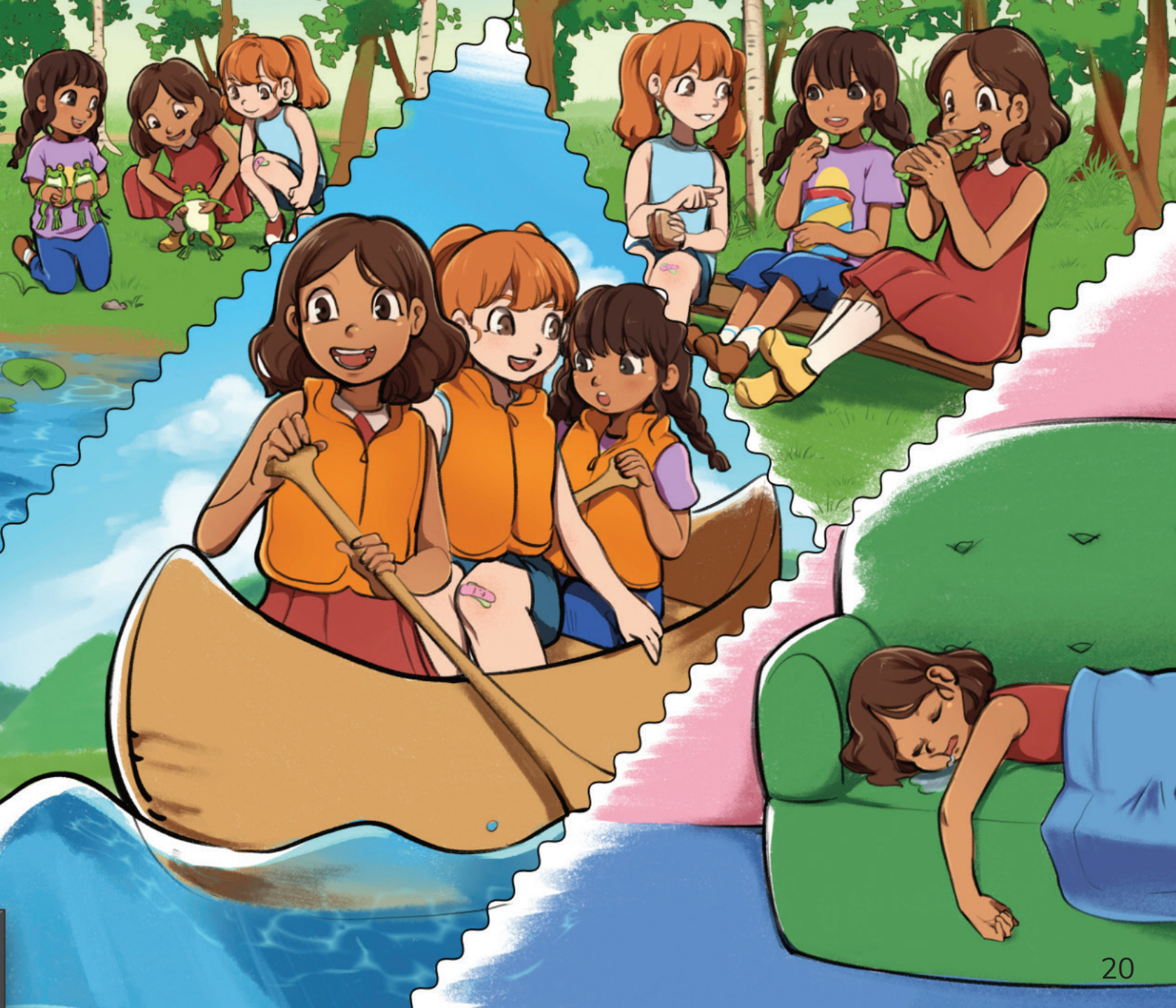
Telpeita'ti'tij, Ema aqq witapa tegismultijig  
aqq elg gwilua'tiji 'sqoljig. Toqo mijjultijig. Ta'n tujiw  
g's'talulti'titeg, na alisugutijig  
gwitnigtug aqq wesg'tijig.

Ta'n tujiw gaqaia'q mawio'mi, na apajinmatejo'lujig.

Ema pegisingeg wiguaq, na atlasmit aqq nepa'ji'jit.

**Ema gispnet.**





NA





“Siawimuinignewa’tu’g ‘Gtli’sutiminu”  
Listuguj Education, Training & Employment  
1 Riverside West,  
Listuguj, QC G0C 2R0  
[www.listuguj.ca](http://www.listuguj.ca)